

AR7500Q

Explosion Proof Network Camera

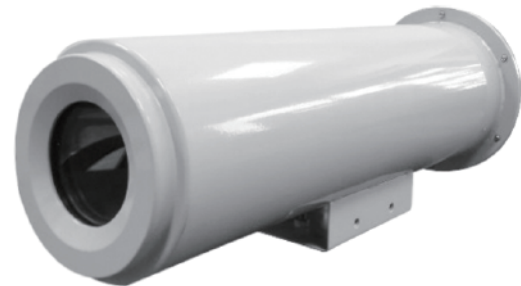
EXdIICT6 explosion proof housing with Arlotto's AR1500 advanced box network camera.

Solid anticorrosional stainless steel construction applicable in a number of locations such as petrol plants, military facilities, oil rigs, gas stations and others. Ideal for explosive and hazardous atmospheres

The AR7500Q includes an IP67 weather proof pan-tilt rotor with a controller box, for a dynamic and remote control of the network camera.



- 5 megapixel high resolution camera
- Pan-tilt weather-proof rotor with controller
- Triple stream H.264/MJPEG/MPEG4
- Digital WDR
- EXdIICT6 certified
- POE/DC power supply
- Varifocal autoiris high definition lens



Camera

| | | |
|----------------------|--|----------------|
| Type | Fix box, metal casting body | |
| Image Sensor | 1/2.5" progressive CMOS | |
| Picture Elements | 2592x1920 | |
| Minimum Illumination | Color | 0.4 LUX @ F1.2 |
| | B/W | 0.2 LUX @ F1.2 |
| | IR ON | 0 Lux |
| Shutter Speed | Automatic, Manual 1/7,5 ~ 1/100,000 seg. | |
| White Balance | Automatic, settings | |
| Gain Control | Automatic | |

Lens

| | | |
|------------------|-------------|---------|
| Megapixel | Yes | |
| Day/Night | Yes | |
| Lens Type | Varifocal | |
| Focal Length | 3.3-10.5mm. | |
| Maximum Aperture | F1,4 | |
| Mount | CS Mount | |
| Image Format | 1/2.5" | |
| Operation | Focus | Manual |
| | Zoom | Manual |
| | Iris | DC iris |

| Operation | | |
|-------------------------|---|--|
| Video Compression | H.264, MJPEG, MPEG4 | |
| Video Stream | Triple stream | |
| Frame Rate | 12 fps. | |
| Image Setting | Brightness, Contrast, Sharpness, White balance, Flicker, Image flip, Shutter speed, Back light compensation, Digital WDR | |
| Audio Compression | G.711, AAC-LC | |
| Two-way Audio | Yes | |
| Alarm Input | 1 input | |
| Alarm Output | 1 digital output | |
| Bit rate | 64-7000Kb. | |
| Video Resolution | | |
| Main Stream | 2592x1920 | |
| Sub Stream | 1920x1080, 1600x1200, 1280x1024, 1280x720, 720x480, 640x480, 320x192 | |
| Network | | |
| Interface | 10/100 Ethernet | |
| Protocol | TCP/IP, SMTP, FTP, HTTP, RTP/RTSP, RTCP, IPv4, UPnP, NTP, ICMP, DHCP | |
| Mechanical | | |
| Connectors | Power | DC Power Jack, PoE |
| | Ethernet | RJ-45 |
| | Audio | 1 In using built in microphone / 1 Out phone jack in 3,5mm |
| | Digital I/O / RS485 | 6 pin terminal block |
| | Auto Iris | Yes |
| | Local Storage | SD/SDHC class 4 or above, USB |
| | TV-Out | SMA to BNC, resolution 640x480 |
| LED Indicator | 2 LED, power/status | |
| General | | |
| Environment Temperature | -10~50°C. | |
| Humidity | 10-90% Not condensing | |
| Power Source | 12V DC / PoE | |
| Max. Power Consumption | 4.8W. DC / 6.1W. PoE | |
| Dimensions (L X W X H) | 134 x 80 x 68 mm (5,28" x 3,15 x 2,68") | |
| Weight | 430g | |
| Regulatory | CE, FCC, RoHS compliant | |
| Power over Ethernet | | |
| PoE Standard | IEEE 802.3af | |
| PoE Power Supply Type | End-span / Mid-span | |
| Web Interface | | |
| Installation Management | Web based configuration | |
| Maintenance | Upgrade through web browser | |
| Access from Web Browser | Camera live view, video recording, video settings, bandwidth control, image snapshot, audio, video/image schedule recording, alarms, tect overlay, network settings | |
| Language | English, Spanish, Arabic, Traditional Chinese, Turkish, Hebrew, French, Russian, Vietnamese | |
| Applications | | |
| Network Storage | Arlotto NVR devices | |
| Live Viewing | IE | |
| CMS Server support | Qgard and Arlotto CMS | |
| Platform | | |
| Standard | Onvif 2.4, PSIA, Profile S | |
| SDK | Available | |
| Explosion-proof Housing | | |
| Housing Material | Stainless steel (304/316L) | |
| Glass thickness | 10mm. | |
| Glass diameter | 66mm. | |
| Air pressure | 790KPa. | |
| Explosion-proof housing | EXdIICT6 | |
| Weather-proof | IP68 | |
| Outer size | 168x505,5x177mm. (WxDxH) | |
| Inner size | 130x350mm. (WxD) | |
| Controller | Remote pan-tilt included | |
| Pan | 270°/350°, max. horizontal angle: 350° | |
| Tilt | -45°-45°/ -90°-90°, max pitching angle: -90°~ 90° | |
| Pan speed | 3.8°/s. | |
| Tilt speed | 3.8°/s. | |
| Power supply | 24VAC/220VAC, 50/60Hz. | |
| Weight | 24.5Kg. | |