

AR7203Q

Explosion Proof Network Camera

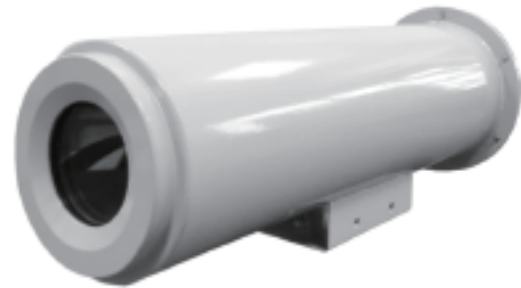
EXdIICT6 explosion proof housing with Arlotto's AR1200 advanced box network camera including 35m. IR light for best night performance.

Solid anticorodal stainless steel construction applicable in a number of locations such as petrol plants, military facilities, oil rigs, gas stations and others. Ideal for explosive and hazardous atmospheres

The AR7203Q includes an IP67 weather proof pan-tilt rotor with a controller box, for a dynamic and remote control of the network camera.



- 2 megapixel high resolution camera
- Pan-tilt weather-proof rotor
- Triple stream H.264/MJPEG/MPEG4
- Real time video (HDTV) 1080p.
- EXdIICT6 certified
- POE/DC power supply and 35m. IR light
- Varifocal, high resolution, autoiris lens



Camera

Type	Fix box, metal casting body with 35m. IR light	
Image Sensor	1/2.5" progressive CMOS	
Picture Elements	1920(H) x 1200(V)	
Minimum Illumination	Color	0.4 LUX @ F1.2
	B/W	0.2 LUX @ F1.2
	IR ON	0 Lux
Shutter Speed	Automatic, Manual 1/7,5 ~ 1/100,000 seg.	
White Balance	Automatic, settings	
Gain Control	Automatic	

Lens

Megapixel	Yes	
Day/Night	Yes	
Lens Type	Varifocal	
Focal Length	3,3-12mm.	
Maximum Aperture	F1,4	
Mount	CS Mount	
Image Format	1/2,7"	
Operation	Focus	Manual
	Zoom	Manual
	Iris	DC iris

Operation		
Video Compression	H.264, MJPEG, MPEG4	
Video Stream	Triple stream	
Frame Rate	30 fps.	
Image Setting	Brightness, Contrast, Sharpness, White balance, Flicker, Image flip, Shutter speed, Back light compensation	
Audio Compression	G.711, AAC-LC	
Two-way Audio	Yes	
Alarm Input	1 input	
Alarm Output	1 digital output	
Bit rate	64-7000Kb.	
Video Resolution		
Main Stream	1920x1080	
Sub Stream	1600x1200, 1280x1024, 1280x720, 720x480, 640x480, 320x192	
Network		
Interface	10/100 Ethernet	
Protocol	TCP/IP, SMTP, FTP, HTTP, RTP/RTSP, RTCP, IPv4, UPnP, NTP, ICMP, DHCP	
Mechanical		
Connectors	Power	DC Power Jack, PoE
	Ethernet	RJ-45
	Audio	1 In using built in microphone / 1 Out phone jack in 3,5mm
	Digital I/O / RS485	6 pin terminal block
	Auto Iris	Yes
	Local Storage	SD/SDHC class 4 or above, USB
	TV-Out	SMA to BNC, resolution 640x480
LED Indicator	2 LED, power/status	
General		
Environment Temperature	-10~50°C.	
Humidity	10-90% Not condensing	
Power Source	12V DC / PoE	
Max. Power Consumption	4.8W. DC / 6.1W. PoE	
Dimensions (L X W X H)	134 x 80 x 68 mm (5,28" x 3,15 x 2,68")	
Weight	430g	
Regulatory	CE, FCC, RoHS compliant	
Power over Ethernet		
PoE Standard	IEEE 802.3af	
PoE Power Supply Type	End-span / Mid-span	
Web Interface		
Installation Management	Web based configuration	
Maintenance	Upgrade through web browser	
Access from Web Browser	Camera live view, video recording, video settings, bandwidth control, image snapshot, audio, video/image schedule recording, alarms, tect overlay, network settings	
Language	English, Spanish, Arabic, Traditional Chinese, Turkish, Hebrew, French, Russian, Vietnamese	
Applications		
Network Storage	Arlotto NVR devices	
Live Viewing	IE	
CMS Server support	Qgard and Arlotto CMS	
Platform		
Standard	Onvif 2.0, PSIA, Profile S	
SDK	Available	
Explosion-proof Housing		
Housing Material	Stainless steel (304/316L)	
Glass thickness	10mm.	
Glass diameter	66mm.	
Air pressure	790KPa.	
Explosion-proof housing	EXdIICT6	
Weather-proof	IP68	
Outer size	168x505,5x177mm. (WxDxH)	
Inner size	130x350mm. (WxD)	
Controller	Remote pan-tilt included	
Pan	270°/350°, max. horizontal angle: 350°	
Tilt	-45°-45° / -90°-90°, max pitching angle: -90°~90°	
Pan speed	3.8°/s.	
Tilt speed	3.8°/s.	
Power supply	24VAC/220VAC, 50/60Hz.	
Weight	24.5Kg.	